



T.S.K. CRANE SERVICE CO.,LTD.

Tel : 0-2874-0011, 0-1641-9621-2 Fax : 0-2874-0309

Load Chart



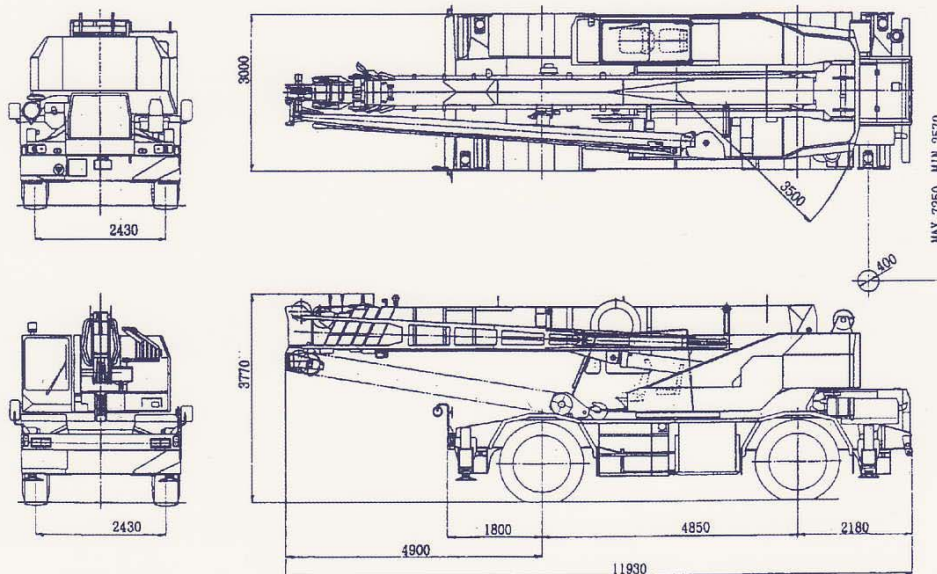
**FOR ROUGH TERRAIN CRANE 50 TONS
MODEL : TADANO TR - 500M - 2**

50 TONS TADANO TR - 500M - 2

CRANE SPECIFICATIONS

Max. Lifting Height	50 ton (45,000 kg.)	Working Radius 3.5 m.
Boom	Boom Section	7 Sections
	Length	9.7 / 16.0 / 22.3 / 28.6 / 34.9 / 38.05 / 41.2 m.
	Jib 2	7.8 / 12.5 m.
Dimensions	Length	11.93 m.
	Width	3 m.
	Height	3.77 m.
Wire Rope	Main Winch	18 mm. X 224 m. (Diameter x Length) Spin - resistant wire rope
	Auxiliary Winch	18 mm. X 120 m. (Diameter x Length) Spin - resistant wire rope
Outriggers	3 Stages	Full extended width 7.25 m.
		Middle extended width 5.5 m., 4.0 m.
		Minimum extended width 2.57 m.
Tires	Front	18.00R25 (OR)
	Rear	18.00R25 (OR)
Weights	Gross Weight	Total 37,790 kg.
		Front 18,900 kg.
		Rear 18,890 kg.

DIMENSIONS (1/100)



TOTAL RATED LOADS								Unit : ton
Outriggers fully extended (7.25m)								-360°
A \ B (m)	9.7 m	16.0 m	22.3 m	28.6 m	34.9 m	38.05 m	41.2 m	
2.5 m	45.0	30.0	20.0	12.0				
3.0 m	45.0	30.0	20.0	12.0				
3.5 m	45.0	30.0	20.0	12.0	10.0			
4.0 m	39.5	30.0	20.0	12.0	10.0	8.0		
4.5 m	35.5	30.0	20.0	12.0	10.0	8.0		
5.0 m	32.0	28.0	20.0	12.0	10.0	8.0	6.0	
5.5 m	29.0	26.0	19.8	12.0	10.0	8.0	6.0	
6.0 m	26.5	24.1	18.7	12.0	10.0	8.0	6.0	
6.5 m	24.0	22.4	17.6	12.0	10.0	8.0	6.0	
7.0 m	22.0	20.6	16.7	12.0	10.0	8.0	6.0	
8.0 m		17.5	15.0	12.0	9.2	8.0	6.0	
9.0 m		14.2	13.4	11.5	8.5	8.0	6.0	
10.0 m		11.8	11.05	10.5	8.0	7.75	6.0	
11.0 m		9.8	9.2	9.5	7.6	7.25	6.0	
12.0 m		8.2	7.75	8.5	7.1	6.75	5.9	
13.0 m		7.0	6.6	7.4	6.7	6.3	5.5	
14.0 m			5.65	6.5	6.3	6.0	5.2	
16.0 m			4.15	4.9	5.3	5.3	4.6	
18.0 m			2.95	3.75	4.15	4.4	4.1	
20.0 m				2.9	3.3	3.5	3.6	
22.0 m				2.2	2.6	2.8	2.95	
24.0 m				1.6	2.05	2.3	2.35	
26.0 m				1.0	1.6	1.85	1.9	
28.0 m					1.2	1.4	1.5	
30.0 m					0.8	1.0	1.15	
32.0 m						0.65	0.85	
34.0 m							0.55	
a (°)	0 ~ 83					18 ~ 83	30 ~ 83	

A = Boom length
 B = Working radius
 a = Boom angle range

(ความยาวของบูม)
 (ระยะห่างจากจุดยก)
 (for the unladen condition) (มุมองศา)



T.S.K. CRANE SERVICE CO.,LTD.

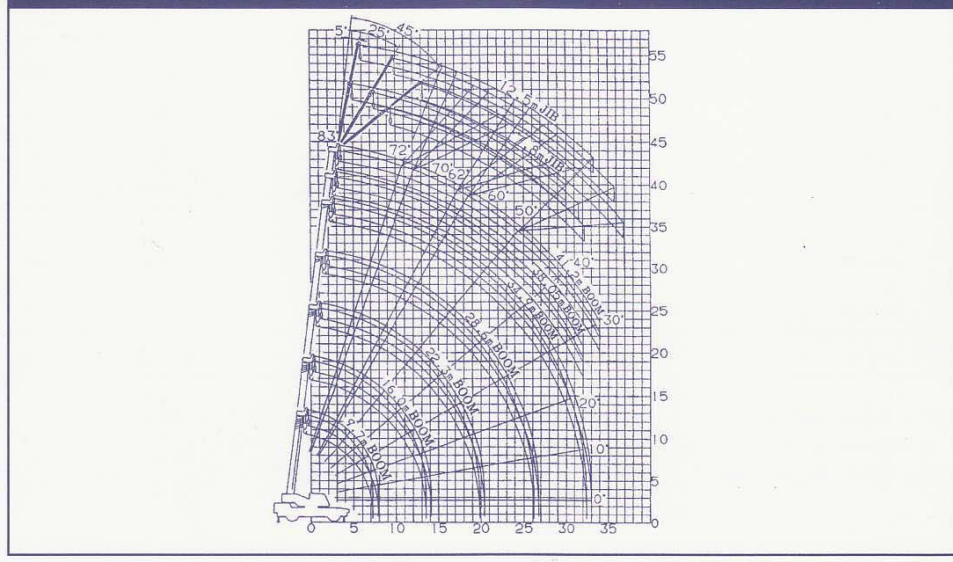
Tel : 0-2874-0011, 0-1641-9621-2 Fax : 0-2874-0309

TADANO TR - 500M - 2

TOTAL RATED LOADS FOR JIB							Unit : ton
							360°
C D E (°)	7.8 m			12.5 m			
	5°	25°	45°	5°	25°	45°	
83	3.5	2.4	1.5	2.5	1.4	0.8	
76	3.5	2.4	1.5	2.5	1.4	0.8	
74	3.25	2.2	1.5	2.25	1.4	0.8	
72	2.95	2.1	1.48	2.05	1.3	0.8	
70	2.65	1.95	1.45	1.9	1.25	0.8	
68	2.4	1.85	1.43	1.75	1.2	0.79	
65	2.1	1.7	1.4	1.55	1.1	0.77	
60	1.7	1.45	1.3	1.3	0.95	0.74	
55	1.2	1.1	1.0	1.0	0.85	0.72	
50	0.65	0.55	0.5	0.5	0.43	0.4	
a (°)	49 ~ 83						
							Unit : ton
Outriggers middle extended (5.5m)							- Over sides -
C D E (°)	7.8 m			12.5 m			
	5°	25°	45°	5°	25°	45°	
83	3.5	2.4	1.5	2.5	1.4	0.8	
76	3.5	2.4	1.5	2.5	1.4	0.8	
74	3.25	2.2	1.5	2.25	1.4	0.8	
72	2.95	2.1	1.48	2.05	1.3	0.8	
70	2.65	1.95	1.45	1.9	1.25	0.8	
68	2.3	1.85	1.43	1.75	1.2	0.79	
65	1.65	1.45	1.25	1.4	1.1	0.77	
62	1.1	0.95	0.8	0.85	0.7	0.65	
a (°)	61 ~ 83						

C = Jib length (ขนาดความยาวของจ๊อบ) D = Jib offset (มุมมองสายของจ๊อบ)
 E = Boom angle (มุมมองสายของบูม) a = Boom angle range (มุมมองสายของบูม) (for the unladen condition) (มุมมองสาย)

WORKING RADIUS - LIFTING HEIGHT



WORKING RADIUS (m)

LIFTING HEIGHT (m)